
	DESIGN & APPLICATION ENGINEERS S.A. ILEKTRAS 2 & KIMIS AVENUE, 15122 MAROUSSI TEL +30 (210)6412233, 2810122 FAX +30 (210)6454825 e-mail: civeng@mhxme.gr web: www.mhxme.com	Détails			
		DATE	03/07/2026	Pg	

Takoradi 192 MW power plant - Ghana

Temps d'étude	Budget (€)	Employeur
2017		METKA S.A.
	Propriétaire	Position
		Takoradi, Ghana

The scope of the project includes the design of a 192MW combined cycle power plant in Takoradi. The plant will be implemented with the capability to operate on both natural gas and light crude oil, and will utilize the latest advanced version of General Electric's well proven 9E gas turbine.



DESIGN & APPLICATION ENGINEERS S.A.
ILEKTRAS 2 & KIMIS AVENUE, 15122 MAROUSSI
TEL +30 (210)6412233, 2810122 FAX +30 (210)6454825
e-mail: civeng@mhxme.gr web: www.mhxme.com

Détails

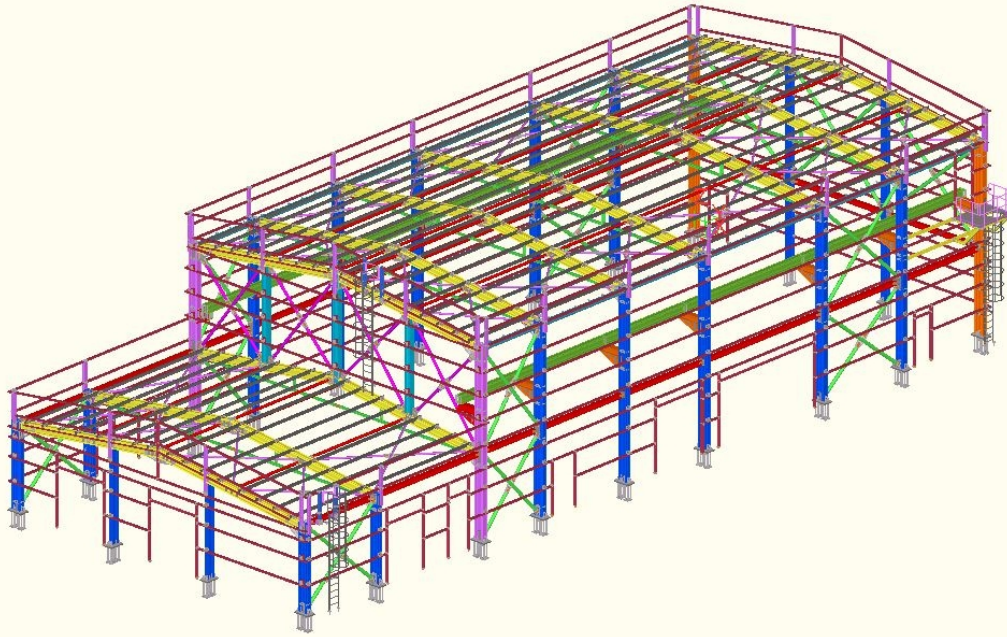


DATE

03/07/2026

Pg

2/4





DESIGN & APPLICATION ENGINEERS S.A.
ILEKTRAS 2 & KIMIS AVENUE, 15122 MAROUSSI
TEL +30 (210)6412233, 2810122 FAX +30 (210)6454825
e-mail: civeng@mhxme.gr web: www.mhxme.com

Détails



DATE

03/07/2026

Pg

3/4

