



DESIGN & APPLICATION ENGINEERS S.A.
ILEKTRAS 2 & KIMIS AVENUE, 15122 MAROUSSI
TEL +30 (210)6412233, 2810122 FAX +30 (210)6454825
e-mail: civeng@mhxme.gr web: www.mhxme.com

Détails



DATE

24/04/2026

Pg

1/7

Natural Gas Metering and Regulating Stations

Temps d'étude	Budget (€)	Employeur
1995-2008	1,000,000.00	AKTOR SA
	Propriétaire	Position
	DEPA-DEFA	Greece

Metering and regulating Stations on the main pipeline Southstream designed between 1995 and 2000. These stations reduce and control the system pressure, count the quantity transferred to the medium pressure system or large users and add special odorizing ingredients for leak detection. 19 similar type buildings were designed all over Greece (Athens, Thessaloniki, Larissa, Volos, Kavala etc) with a very unique and characteristic form, made of concrete with a steel, detachable in case of explosion, roof.

At 2004 we designed the border Station at Kipi Evros for the new Turkey-Greece pipeline and between 2007-2008 three new stations (at Motoroil Refineries, at Aluminium factory and at Alexandroupoli).



DESIGN & APPLICATION ENGINEERS S.A.
ILEKTRAS 2 & KIMIS AVENUE, 15122 MAROUSSI
TEL +30 (210)6412233, 2810122 FAX +30 (210)6454825
e-mail: civeng@mhxme.gr web: www.mhxme.com

Détails



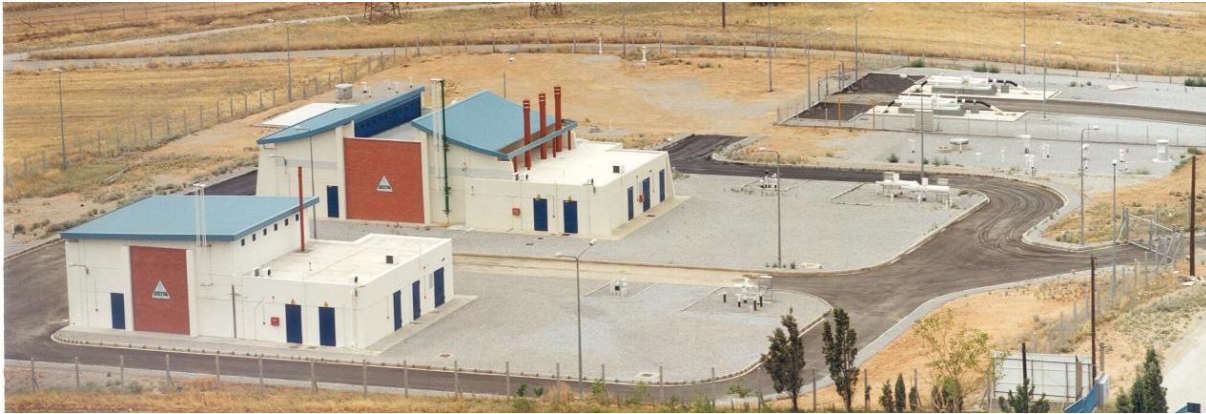
DATE

24/04/2026

Pg

2/7

Aspropirgos Stations U2960-U2970





DESIGN & APPLICATION ENGINEERS S.A.
ILEKTRAS 2 & KIMIS AVENUE, 15122 MAROUSSI
TEL +30 (210)6412233, 2810122 FAX +30 (210)6454825
e-mail: civeng@mhxme.gr web: www.mhxme.com

Détails



DATE

24/04/2026

Pg

3/7

Metering and Regulating Station





DESIGN & APPLICATION ENGINEERS S.A.
ILEKTRAS 2 & KIMIS AVENUE, 15122 MAROUSSI
TEL +30 (210)6412233, 2810122 FAX +30 (210)6454825
e-mail: civeng@mhxme.gr web: www.mhxme.com

Détails



DATE

24/04/2026

Pg

4/7

Metering and Regulating Station-Interior





DESIGN & APPLICATION ENGINEERS S.A.
ILEKTRAS 2 & KIMIS AVENUE, 15122 MAROUSSI
TEL +30 (210)6412233, 2810122 FAX +30 (210)6454825
e-mail: civeng@mhxme.gr web: www.mhxme.com

Détails



DATE

24/04/2026

Pg

5/7

Border Station at Kipi Evros-Aerial View





DESIGN & APPLICATION ENGINEERS S.A.
ILEKTRAS 2 & KIMIS AVENUE, 15122 MAROUSSI
TEL +30 (210)6412233, 2810122 FAX +30 (210)6454825
e-mail: civeng@mhxme.gr web: www.mhxme.com

Détails



DATE

24/04/2026

Pg

6/7

Border Station at Kipi Evros-Control Building





DESIGN & APPLICATION ENGINEERS S.A.
ILEKTRAS 2 & KIMIS AVENUE, 15122 MAROUSSI
TEL +30 (210)6412233, 2810122 FAX +30 (210)6454825
e-mail: civeng@mhxme.gr web: www.mhxme.com

Détails



DATE

24/04/2026

Pg

7/7

Border Station at Kipi Evros-EM installations

