



**DESIGN & APPLICATION ENGINEERS S.A.**  
ILEKTRAS 2 & KIMIS AVENUE, 15122 MAROUSSI  
TEL +30 (210)6412233, 2810122 FAX +30 (210)6454825  
e-mail: civeng@mhxme.gr web: www.mhxme.com

Détails



DATE

24/04/2026

Pg

1/15

## **Golden Hall**

<b>Temps d'étude</b>	<b>Budget (€)</b>	<b>Employeur</b>
2006-2007	25,000,000.00	LAMDA DOMI S.A.
	<b>Propriétaire</b>	<b>Position</b>
	LAMDA DEVELOPMENT	Maroussi Athens

Modification of the Athens 2004 Olympic Games International Broadcasting Venter to a mall named Golden Hall. The IBC building consists of a concrete basement and a steel superstructure with height of 14-16 m with some small intermediate levels at 6 out of the 11 structurally independent parts. The design keeps the outer shell of the superstructure adding intermediate floors for shops. Extended modifications to the structural system were required with the position of new columns and bracings, openings to existing slabs as well as special designs in order to avoid strengthening to the concrete substructure under the new increased static and seismic loads.

The Golden Hall is the second largest mall in Athens with total Gross Leasable Area (GLA) 41000 m<sup>2</sup> housing 135 shops plus 60000 m<sup>2</sup> of basement parking areas with 1400 vehicles capacity.



**DESIGN & APPLICATION ENGINEERS S.A.**  
ILEKTRAS 2 & KIMIS AVENUE, 15122 MAROUSSI  
TEL +30 (210)6412233, 2810122 FAX +30 (210)6454825  
e-mail: civeng@mhxme.gr web: www.mhxme.com

Détails



DATE

24/04/2026

Pg

2/15

*Entrance View from Kifissias Ave.*





**DESIGN & APPLICATION ENGINEERS S.A.**  
ILEKTRAS 2 & KIMIS AVENUE, 15122 MAROUSSI  
TEL +30 (210)6412233, 2810122 FAX +30 (210)6454825  
e-mail: civeng@mhxme.gr web: www.mhxme.com

Détails



DATE

24/04/2026

Pg

3/15

*Aerial View of IBC 2004*





**DESIGN & APPLICATION ENGINEERS S.A.**  
ILEKTRAS 2 & KIMIS AVENUE, 15122 MAROUSSI  
TEL +30 (210)6412233, 2810122 FAX +30 (210)6454825  
e-mail: civeng@mhxme.gr web: www.mhxme.com

Détails



DATE

24/04/2026

Pg

4/15

*Golden Hall General View*





**DESIGN & APPLICATION ENGINEERS S.A.**  
ILEKTRAS 2 & KIMIS AVENUE, 15122 MAROUSSI  
TEL +30 (210)6412233, 2810122 FAX +30 (210)6454825  
e-mail: civeng@mhxme.gr web: www.mhxme.com

Détails



DATE

24/04/2026

Pg

5/15

*Office Building Part*





**DESIGN & APPLICATION ENGINEERS S.A.**  
ILEKTRAS 2 & KIMIS AVENUE, 15122 MAROUSSI  
TEL +30 (210)6412233, 2810122 FAX +30 (210)6454825  
e-mail: civeng@mhxme.gr web: www.mhxme.com

Détails



DATE

24/04/2026

Pg

6/15

*Main Entrance*





**DESIGN & APPLICATION ENGINEERS S.A.**  
ILEKTRAS 2 & KIMIS AVENUE, 15122 MAROUSSI  
TEL +30 (210)6412233, 2810122 FAX +30 (210)6454825  
e-mail: civeng@mhxme.gr web: www.mhxme.com

Détails



DATE

24/04/2026

Pg

7/15

*Night View*





**DESIGN & APPLICATION ENGINEERS S.A.**  
ILEKTRAS 2 & KIMIS AVENUE, 15122 MAROUSSI  
TEL +30 (210)6412233, 2810122 FAX +30 (210)6454825  
e-mail: civeng@mhxme.gr web: www.mhxme.com

Détails



DATE

24/04/2026

Pg

8/15

*Interior View*





**DESIGN & APPLICATION ENGINEERS S.A.**  
ILEKTRAS 2 & KIMIS AVENUE, 15122 MAROUSSI  
TEL +30 (210)6412233, 2810122 FAX +30 (210)6454825  
e-mail: civeng@mhxme.gr web: www.mhxme.com

Détails



DATE

24/04/2026

Pg

9/15

*Interior View*





**DESIGN & APPLICATION ENGINEERS S.A.**  
ILEKTRAS 2 & KIMIS AVENUE, 15122 MAROUSSI  
TEL +30 (210)6412233, 2810122 FAX +30 (210)6454825  
e-mail: civeng@mhxme.gr web: www.mhxme.com

Détails



DATE

24/04/2026

Pg

10/15

*Interior View-Roof*





**DESIGN & APPLICATION ENGINEERS S.A.**  
ILEKTRAS 2 & KIMIS AVENUE, 15122 MAROUSSI  
TEL +30 (210)6412233, 2810122 FAX +30 (210)6454825  
e-mail: civeng@mhxme.gr web: www.mhxme.com

Détails



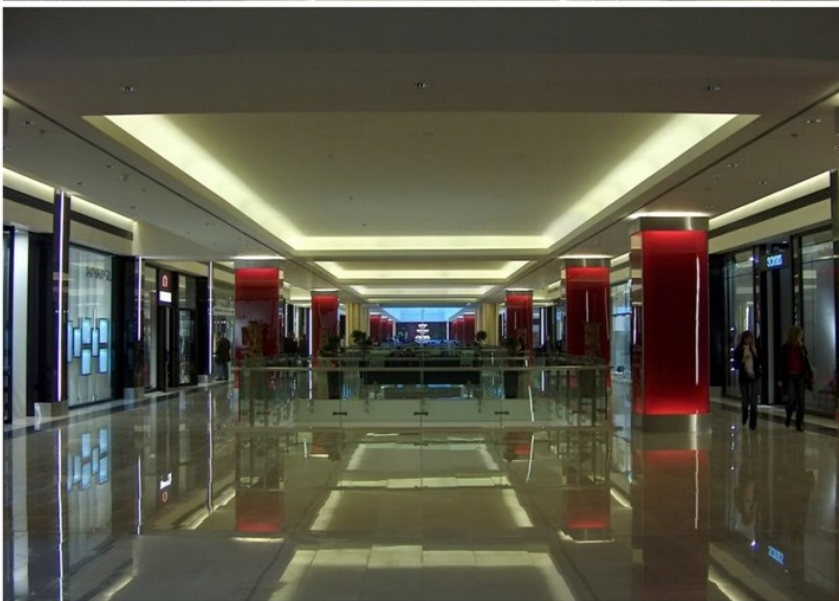
DATE

24/04/2026

Pg

11/15

*Interior View*





**DESIGN & APPLICATION ENGINEERS S.A.**  
ILEKTRAS 2 & KIMIS AVENUE, 15122 MAROUSSI  
TEL +30 (210)6412233, 2810122 FAX +30 (210)6454825  
e-mail: civeng@mhxme.gr web: www.mhxme.com

Détails



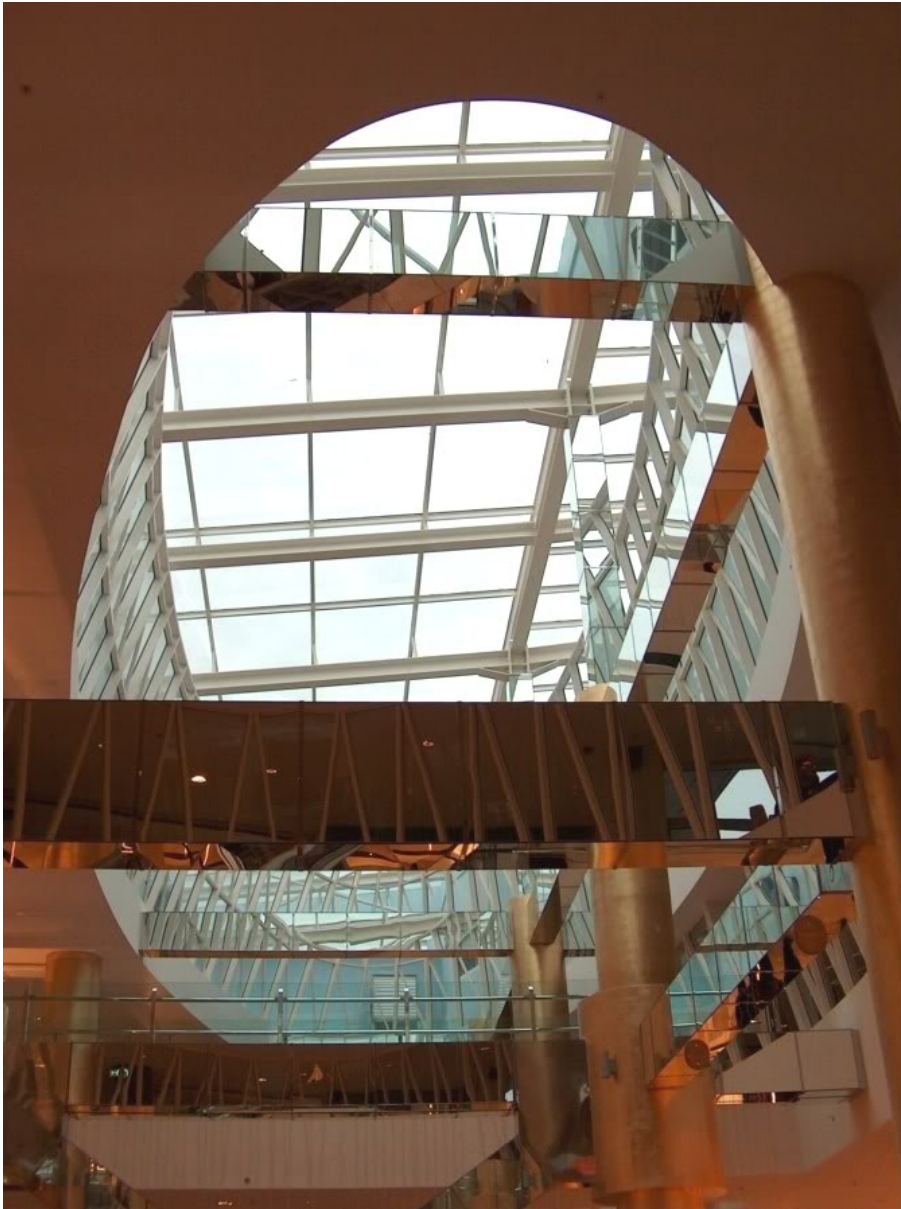
DATE

24/04/2026

Pg

12/15

*Natural Light from Roof*





**DESIGN & APPLICATION ENGINEERS S.A.**  
ILEKTRAS 2 & KIMIS AVENUE, 15122 MAROUSSI  
TEL +30 (210)6412233, 2810122 FAX +30 (210)6454825  
e-mail: civeng@mhxme.gr web: www.mhxme.com

Détails



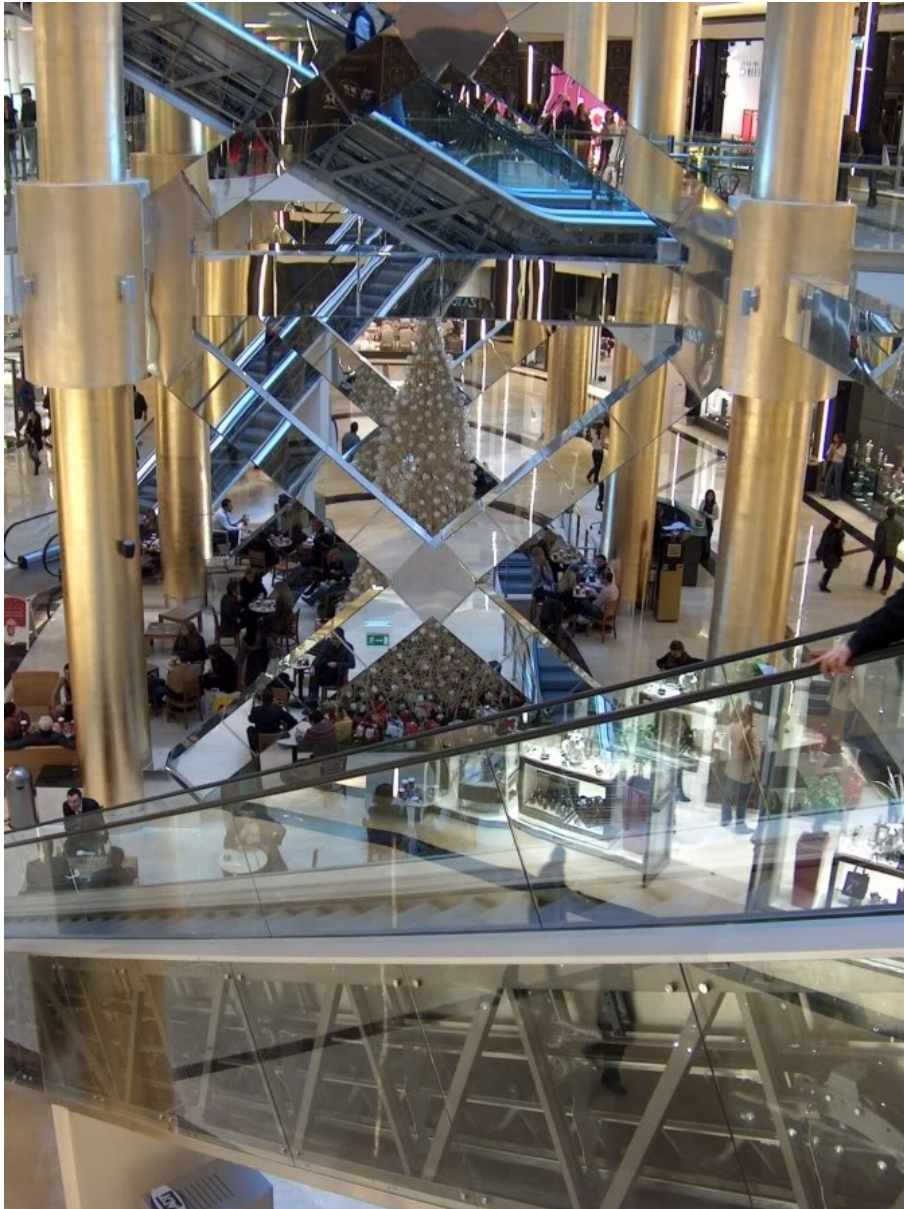
DATE

24/04/2026

Pg

13/15

*Interior View-Staircases*





**DESIGN & APPLICATION ENGINEERS S.A.**  
ILEKTRAS 2 & KIMIS AVENUE, 15122 MAROUSSI  
TEL +30 (210)6412233, 2810122 FAX +30 (210)6454825  
e-mail: civeng@mhxme.gr web: www.mhxme.com

Détails



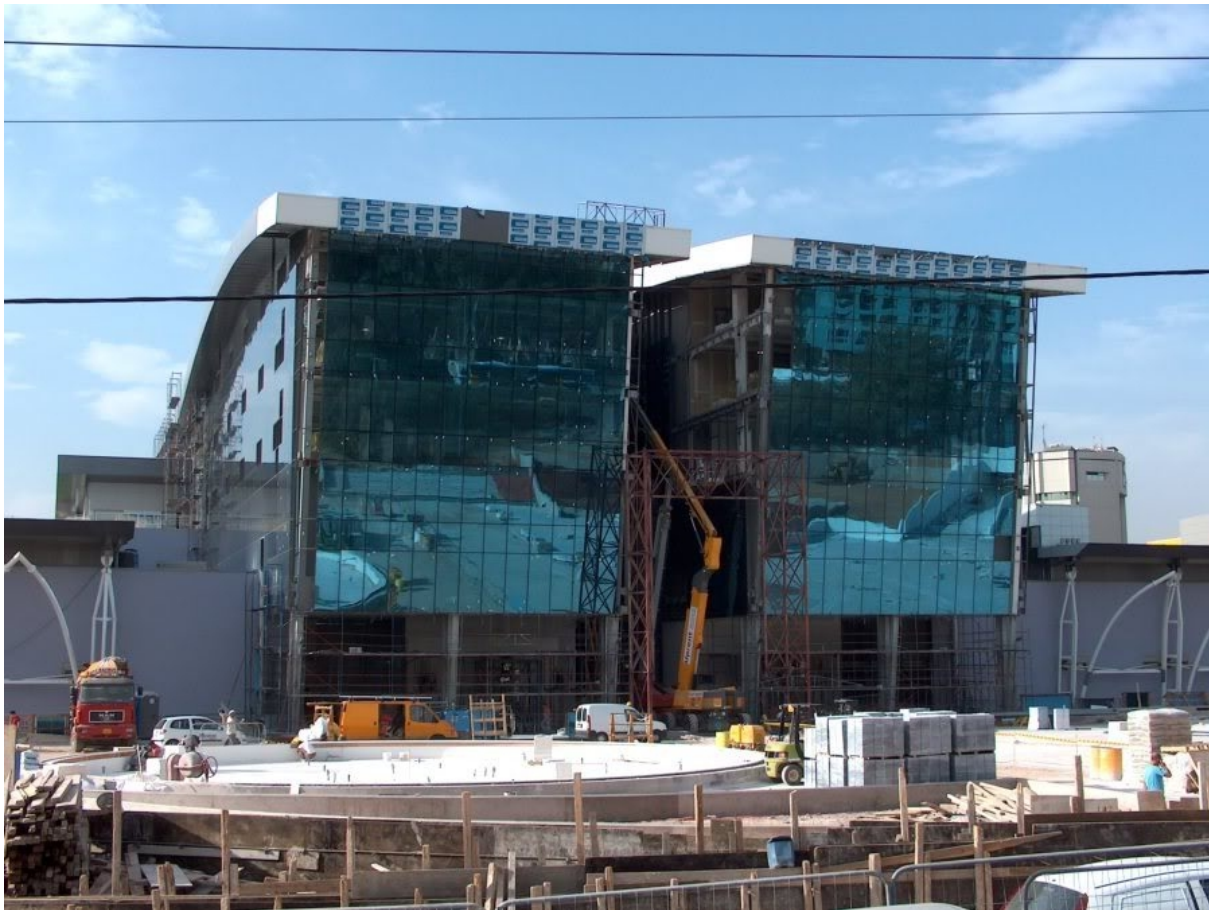
DATE

24/04/2026

Pg

14/15

*Construction stage*





*Strengthening of steel column support*

