
	DESIGN & APPLICATION ENGINEERS S.A. ILEKTRAS 2 & KIMIS AVENUE, 15122 MAROUSSI TEL +30 (210)6412233, 2810122 FAX +30 (210)6454825 e-mail: civeng@mhxme.gr web: www.mhxme.com	Einzelheiten			
		DATUM	03/07/2026	Pg	

High-rise building at Sofia - TAL1

Zeit-Studie	Budget (€)	Arbeitgeber
2008-2009	25.00	ARCON CONSTRUCTIONS SA
	Besitzer	Position
		SOFIA- Todor Alexandrov Str

High-rise office building at Sofia Bulgaria named TAL1. The building is foreseen to have 35 floors (total height 127 m) and 5 basements accommodating parking and EM spaces. In addition a separate mechanical parking building rests on an underground extension of basement floors. For economo-technical reasons the structural system is foreseen with high-strength concrete. The building will e founded on piles. A full final structural design was executed, following the conceptual design of Buro Happold. No construction work has commenced till now.

Two more high rise buildings with code name TALOP and TALSHELL were designed at preliminary stage. These 2 buildings are located at the same area of Sofia and all 3 buildings have approximately the same number of floors and the same total height.



DESIGN & APPLICATION ENGINEERS S.A.
ILEKTRAS 2 & KIMIS AVENUE, 15122 MAROUSSI
TEL +30 (210)6412233, 2810122 FAX +30 (210)6454825
e-mail: civeng@mhxme.gr web: www.mhxme.com

Einzelheiten



DATUM

03/07/2026

Pg

2/7

TAL Photorealistic View





DESIGN & APPLICATION ENGINEERS S.A.
ILEKTRAS 2 & KIMIS AVENUE, 15122 MAROUSSI
TEL +30 (210)6412233, 2810122 FAX +30 (210)6454825
e-mail: civeng@mhxme.gr web: www.mhxme.com

Einzelheiten



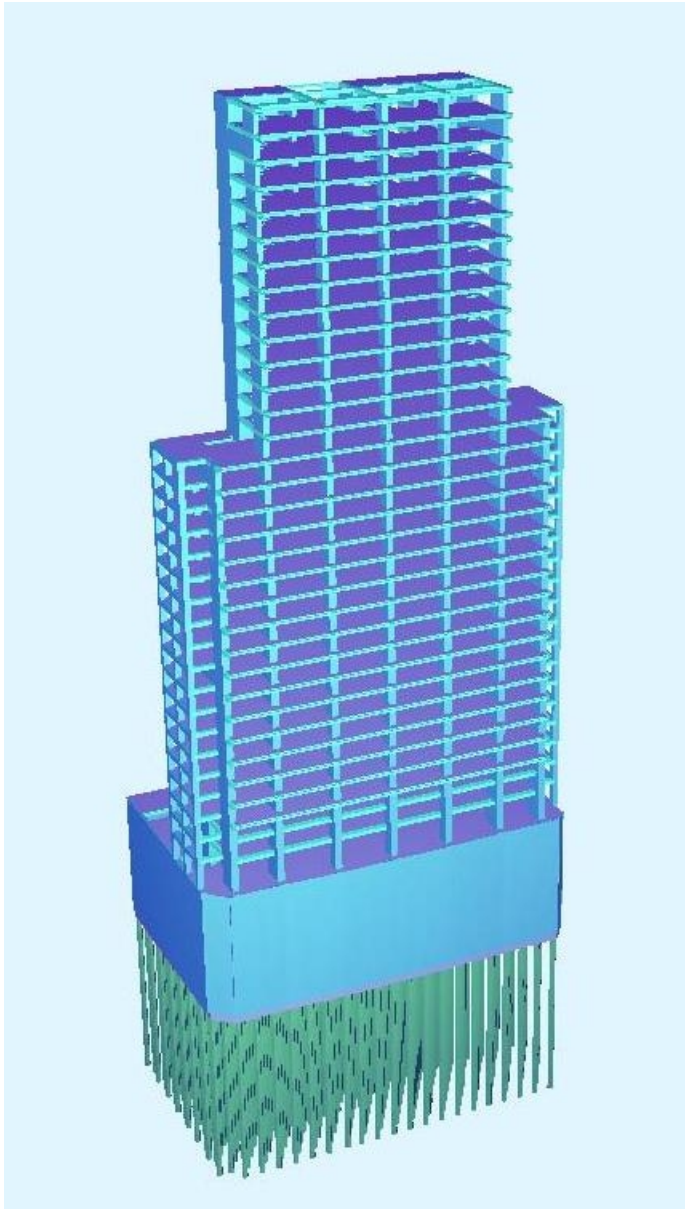
DATUM

03/07/2026

Pg

3/7

TAL-Analysis model





DESIGN & APPLICATION ENGINEERS S.A.
ILEKTRAS 2 & KIMIS AVENUE, 15122 MAROUSSI
TEL +30 (210)6412233, 2810122 FAX +30 (210)6454825
e-mail: civeng@mhxme.gr web: www.mhxme.com

Einzelheiten



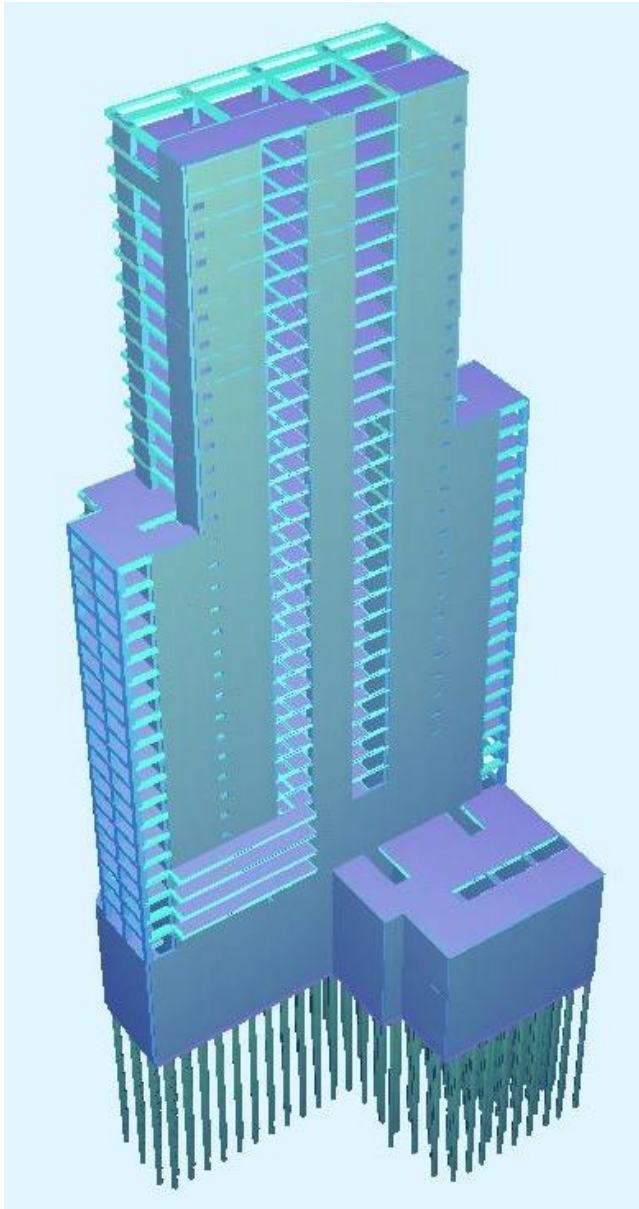
DATUM

03/07/2026

Pg

4/7

TAL-Analysis model





DESIGN & APPLICATION ENGINEERS S.A.
ILEKTRAS 2 & KIMIS AVENUE, 15122 MAROUSSI
TEL +30 (210)6412233, 2810122 FAX +30 (210)6454825
e-mail: civeng@mhxme.gr web: www.mhxme.com

Einzelheiten



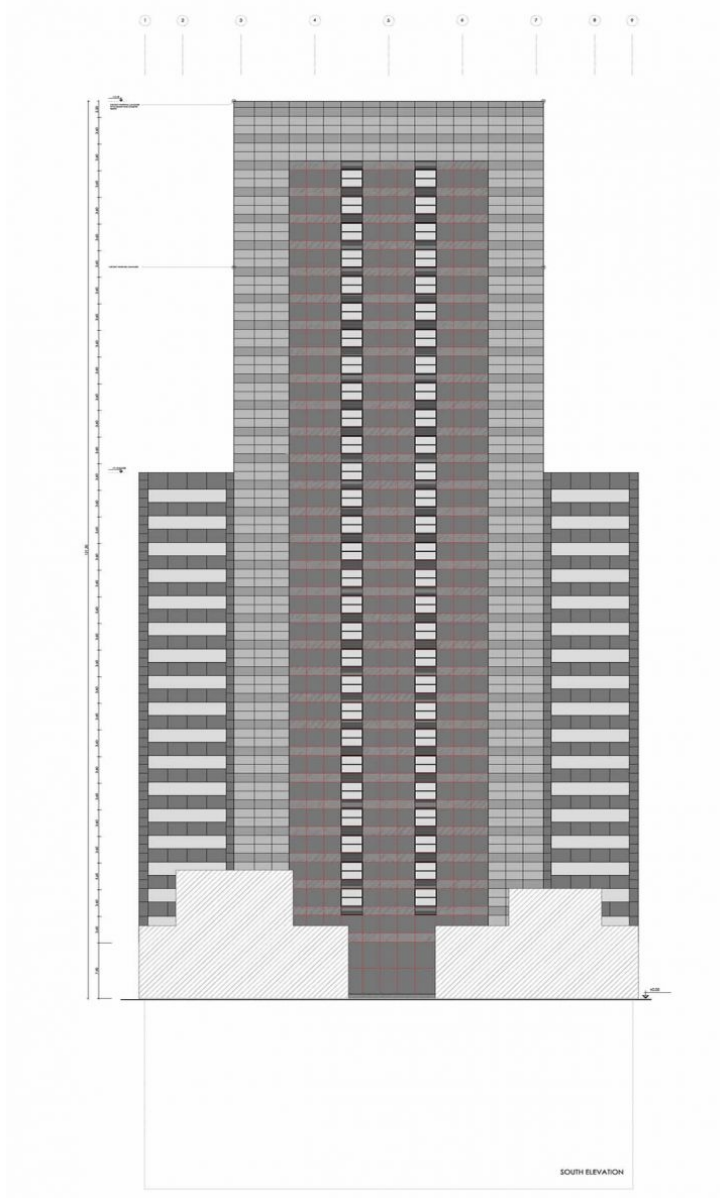
DATUM

03/07/2026

Pg

5/7

TAL-Architectural Section





DESIGN & APPLICATION ENGINEERS S.A.
ILEKTRAS 2 & KIMIS AVENUE, 15122 MAROUSSI
TEL +30 (210)6412233, 2810122 FAX +30 (210)6454825
e-mail: civeng@mhxme.gr web: www.mhxme.com

Einzelheiten



DATUM

03/07/2026

Pg

6/7

TALOP-Opalchenska Str. Sofia-Photorealistic View





DESIGN & APPLICATION ENGINEERS S.A.
ILEKTRAS 2 & KIMIS AVENUE, 15122 MAROUSSI
TEL +30 (210)6412233, 2810122 FAX +30 (210)6454825
e-mail: civeng@mhxme.gr web: www.mhxme.com

Einzelheiten



DATUM

03/07/2026

Pg

7/7

TALSHELL-Sofia-Photorealistic View

