
	<b>DESIGN &amp; APPLICATION ENGINEERS S.A.</b> ILEKTRAS 2 & KIMIS AVENUE, 15122 MAROUSSI TEL +30 (210)6412233, 2810122 FAX +30 (210)6454825 e-mail: civeng@mhxme.gr web: www.mhxme.com	Einzelheiten			
		DATUM	24/04/2026	Pg	

### **Natural Gas Metering and Regulating Stations**

<b>Zeit-Studie</b>	<b>Budget (€)</b>	<b>Arbeitgeber</b>
1995-2008	1,000,000.00	AKTOR SA
	<b>Besitzer</b>	<b>Position</b>
	DEPA-DEFA	Greece

Metering and regulating Stations on the main pipeline Southstream designed between 1995 and 2000. These stations reduce and control the system pressure, count the quantity transferred to the medium pressure system or large users and add special odorizing ingredients for leak detection. 19 similar type buildings were designed all over Greece (Athens, Thessaloniki, Larissa, Volos, Kavala etc) with a very unique and characteristic form, made of concrete with a steel, detachable in case of explosion, roof.

At 2004 we designed the border Station at Kipi Evros for the new Turkey-Greece pipeline and between 2007-2008 three new stations (at Motoroil Refineries, at Aluminium factory and at Alexandroupoli).



**DESIGN & APPLICATION ENGINEERS S.A.**  
ILEKTRAS 2 & KIMIS AVENUE, 15122 MAROUSSI  
TEL +30 (210)6412233, 2810122 FAX +30 (210)6454825  
e-mail: civeng@mhxme.gr web: www.mhxme.com

Einzelheiten



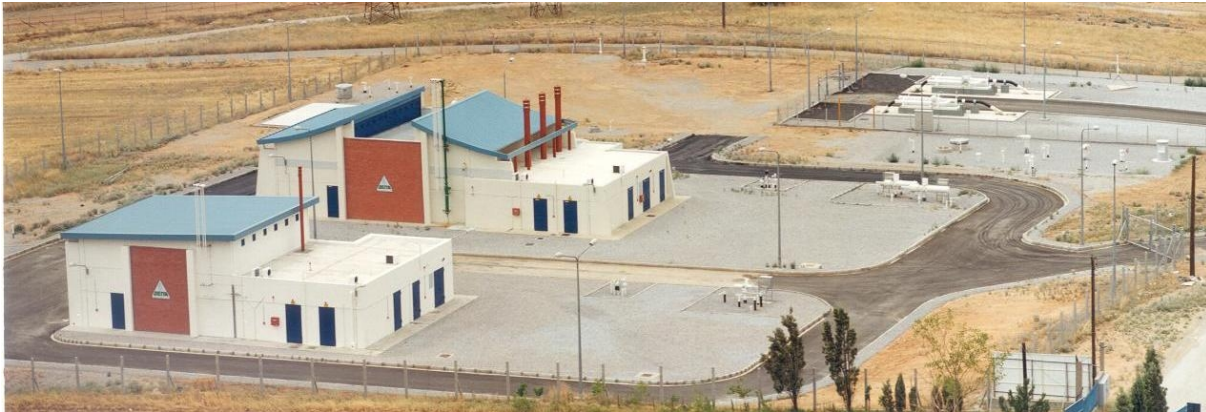
DATUM

24/04/2026

Pg

2/7

*Aspropirgos Stations U2960-U2970*





**DESIGN & APPLICATION ENGINEERS S.A.**  
ILEKTRAS 2 & KIMIS AVENUE, 15122 MAROUSSI  
TEL +30 (210)6412233, 2810122 FAX +30 (210)6454825  
e-mail: civeng@mhxme.gr web: www.mhxme.com

Einzelheiten



DATUM

24/04/2026

Pg

3/7

*Metering and Regulating Station*





**DESIGN & APPLICATION ENGINEERS S.A.**  
ILEKTRAS 2 & KIMIS AVENUE, 15122 MAROUSSI  
TEL +30 (210)6412233, 2810122 FAX +30 (210)6454825  
e-mail: civeng@mhxme.gr web: www.mhxme.com

Einzelheiten



DATUM

24/04/2026

Pg

4/7

*Metering and Regulating Station-Interior*





**DESIGN & APPLICATION ENGINEERS S.A.**  
ILEKTRAS 2 & KIMIS AVENUE, 15122 MAROUSSI  
TEL +30 (210)6412233, 2810122 FAX +30 (210)6454825  
e-mail: civeng@mhxme.gr web: www.mhxme.com

Einzelheiten



DATUM

24/04/2026

Pg

5/7

*Border Station at Kipi Evros-Aerial View*





**DESIGN & APPLICATION ENGINEERS S.A.**  
ILEKTRAS 2 & KIMIS AVENUE, 15122 MAROUSSI  
TEL +30 (210)6412233, 2810122 FAX +30 (210)6454825  
e-mail: civeng@mhxme.gr web: www.mhxme.com

Einzelheiten



DATUM

24/04/2026

Pg

6/7

*Border Station at Kipi Evros-Control Building*





**DESIGN & APPLICATION ENGINEERS S.A.**  
ILEKTRAS 2 & KIMIS AVENUE, 15122 MAROUSSI  
TEL +30 (210)6412233, 2810122 FAX +30 (210)6454825  
e-mail: civeng@mhxme.gr web: www.mhxme.com

Einzelheiten



DATUM

24/04/2026

Pg

7/7

*Border Station at Kipi Evros-EM installations*

