
	<b>DESIGN &amp; APPLICATION ENGINEERS S.A.</b> ILEKTRAS 2 & KIMIS AVENUE, 15122 MAROUSSI TEL +30 (210)6412233, 2810122 FAX +30 (210)6454825 e-mail: civeng@mhxme.gr web: www.mhxme.com	Einzelheiten			
		DATUM	04/07/2026	Pg	

**Olympias Phase II project**

<b>Zeit-Studie</b>	<b>Budget (€)</b>	<b>Arbeitgeber</b>
2015-2016		Hellas Gold S.A.
	<b>Besitzer</b>	<b>Position</b>
	Eldorado Gold Corporation	Chalkidiki Peninsula

OLYMPIAS is a pre-existing gold / silver / lead / zinc mine, located in the Chalkidiki Peninsula in northern Greece, owned by Hellas Gold S.A. a subsidiary of Eldorado Gold Corporation.

The Olympias Phase II project included the design, supply and construction of a nominal 400.000 tpa mineral processing plant, comprising of crushing and screening, ore storage, primary grinding, sequential flotation, regrinding, thickening, filtration, product packaging, tailings backfill, water services, reagents systems, plant services and power supply on a brownfield site, ensuring a planned 10 year minimum design life.

**DAE** for being civil consultants for the Owner, were responsible for the detailed civil, structural and plate work design - based on the Basic Design performed by GRES Ltd - and for the site supervision of the project as well.



**DESIGN & APPLICATION ENGINEERS S.A.**  
ILEKTRAS 2 & KIMIS AVENUE, 15122 MAROUSSI  
TEL +30 (210)6412233, 2810122 FAX +30 (210)6454825  
e-mail: civeng@mhxme.gr web: www.mhxme.com

Einzelheiten

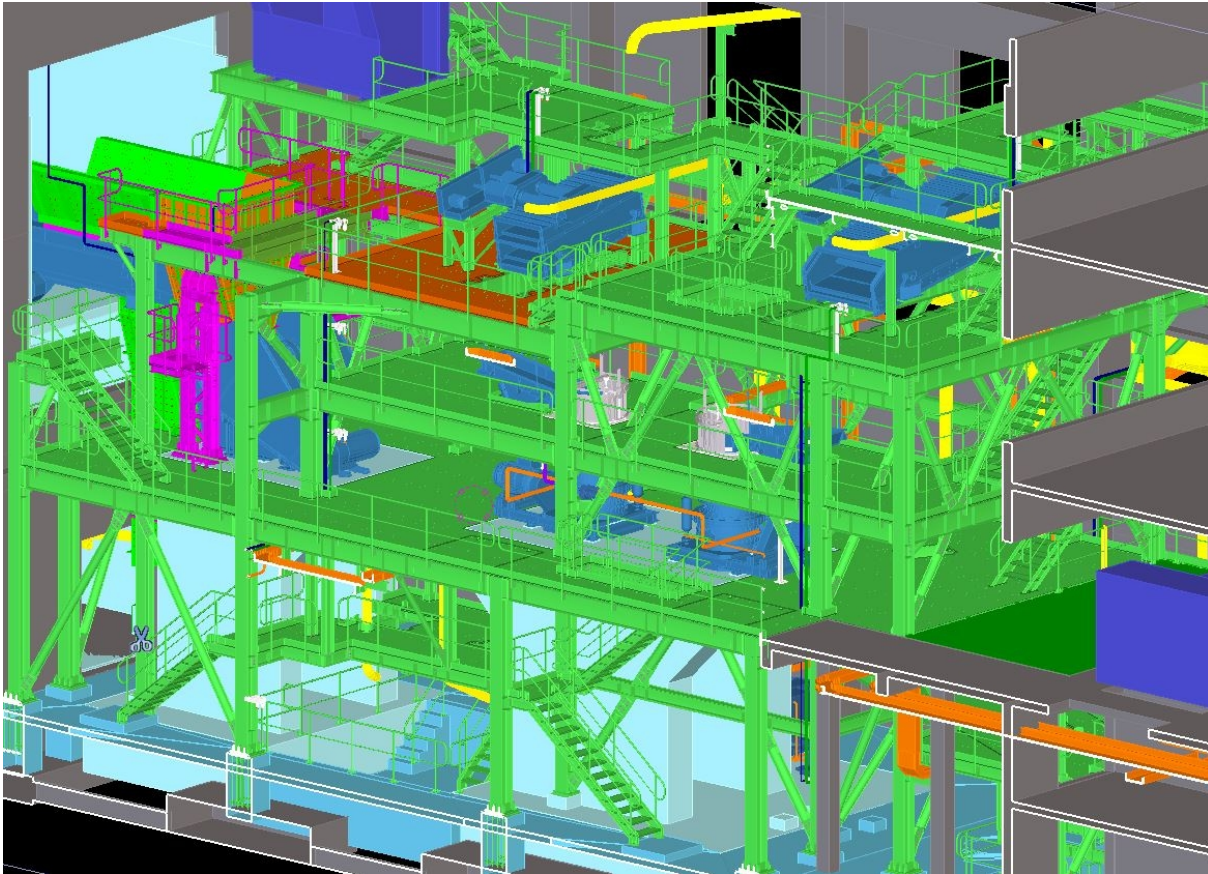


DATUM

04/07/2026

Pg

2/11





**DESIGN & APPLICATION ENGINEERS S.A.**  
ILEKTRAS 2 & KIMIS AVENUE, 15122 MAROUSSI  
TEL +30 (210)6412233, 2810122 FAX +30 (210)6454825  
e-mail: civeng@mhxme.gr web: www.mhxme.com

Einzelheiten



DATUM

04/07/2026

Pg

3/11





**DESIGN & APPLICATION ENGINEERS S.A.**  
ILEKTRAS 2 & KIMIS AVENUE, 15122 MAROUSSI  
TEL +30 (210)6412233, 2810122 FAX +30 (210)6454825  
e-mail: civeng@mhxme.gr web: www.mhxme.com

Einzelheiten

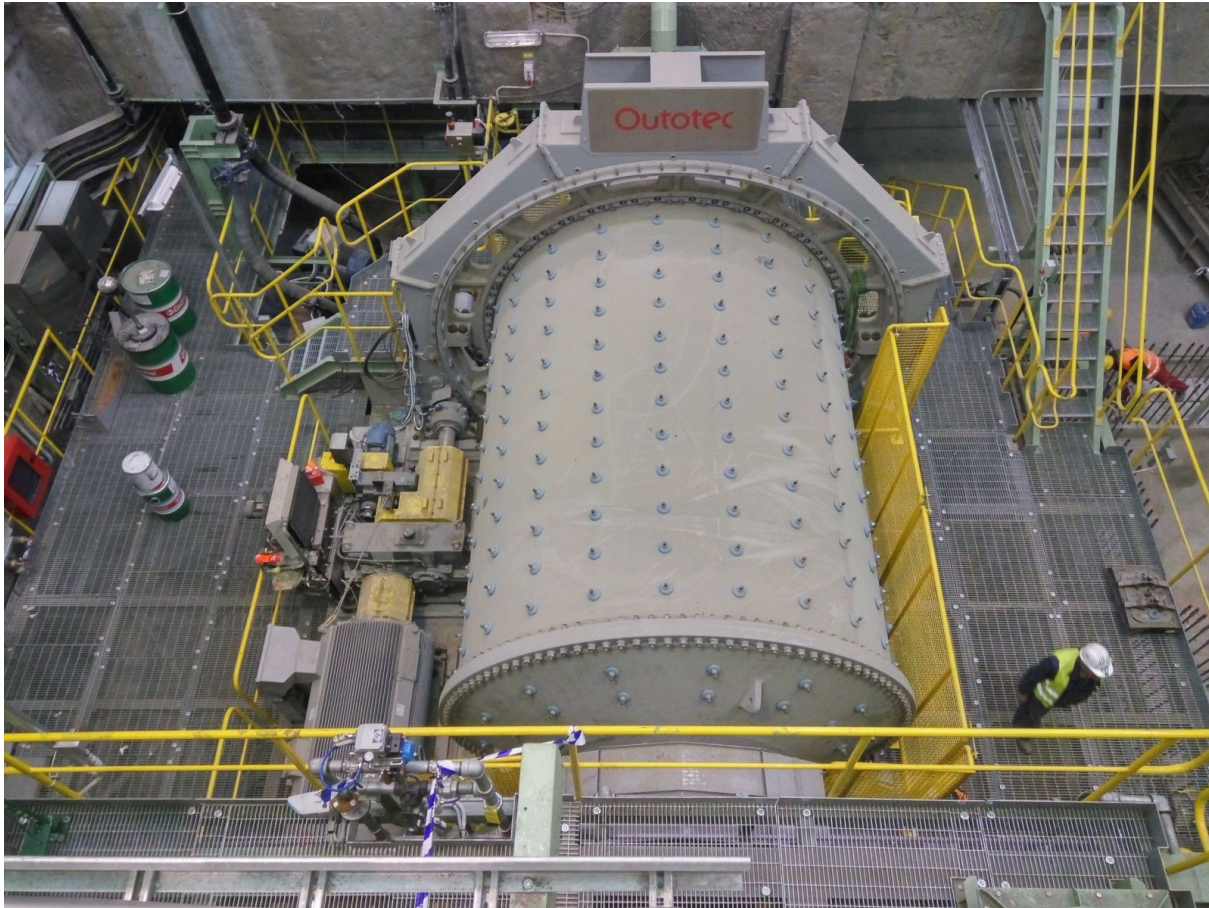


DATUM

04/07/2026

Pg

4/11





**DESIGN & APPLICATION ENGINEERS S.A.**  
ILEKTRAS 2 & KIMIS AVENUE, 15122 MAROUSSI  
TEL +30 (210)6412233, 2810122 FAX +30 (210)6454825  
e-mail: civeng@mhxme.gr web: www.mhxme.com

Einzelheiten



DATUM

04/07/2026

Pg

5/11





**DESIGN & APPLICATION ENGINEERS S.A.**  
ILEKTRAS 2 & KIMIS AVENUE, 15122 MAROUSSI  
TEL +30 (210)6412233, 2810122 FAX +30 (210)6454825  
e-mail: civeng@mhxme.gr web: www.mhxme.com

Einzelheiten



DATUM

04/07/2026

Pg

6/11





**DESIGN & APPLICATION ENGINEERS S.A.**  
ILEKTRAS 2 & KIMIS AVENUE, 15122 MAROUSSI  
TEL +30 (210)6412233, 2810122 FAX +30 (210)6454825  
e-mail: civeng@mhxme.gr web: www.mhxme.com

Einzelheiten

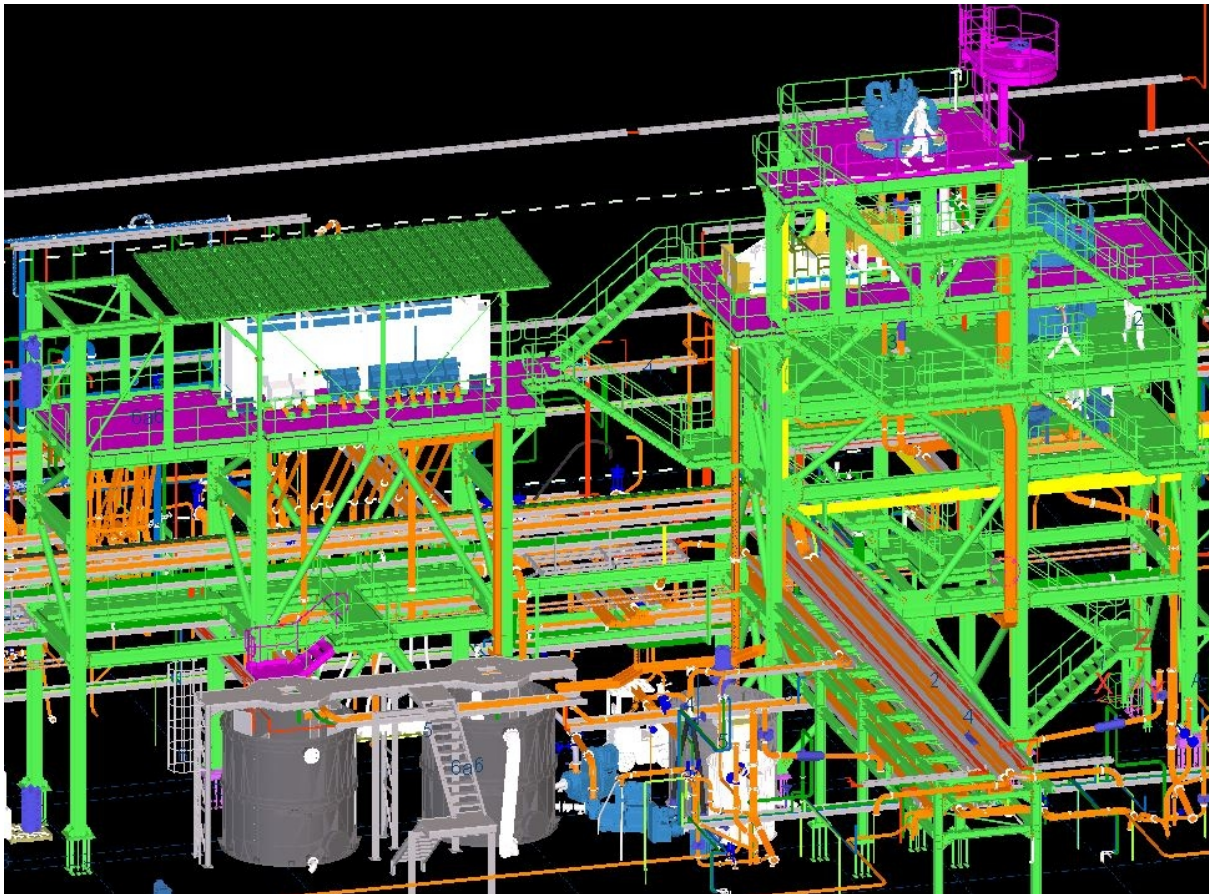


DATUM

04/07/2026

Pg

7/11





**DESIGN & APPLICATION ENGINEERS S.A.**  
ILEKTRAS 2 & KIMIS AVENUE, 15122 MAROUSSI  
TEL +30 (210)6412233, 2810122 FAX +30 (210)6454825  
e-mail: civeng@mhxme.gr web: www.mhxme.com

Einzelheiten



DATUM

04/07/2026

Pg

8/11





**DESIGN & APPLICATION ENGINEERS S.A.**  
ILEKTRAS 2 & KIMIS AVENUE, 15122 MAROUSSI  
TEL +30 (210)6412233, 2810122 FAX +30 (210)6454825  
e-mail: civeng@mhxme.gr web: www.mhxme.com

Einzelheiten



DATUM

04/07/2026

Pg

9/11





**DESIGN & APPLICATION ENGINEERS S.A.**  
ILEKTRAS 2 & KIMIS AVENUE, 15122 MAROUSSI  
TEL +30 (210)6412233, 2810122 FAX +30 (210)6454825  
e-mail: civeng@mhxme.gr web: www.mhxme.com

Einzelheiten



DATUM

04/07/2026

Pg

10/11





**DESIGN & APPLICATION ENGINEERS S.A.**  
ILEKTRAS 2 & KIMIS AVENUE, 15122 MAROUSSI  
TEL +30 (210)6412233, 2810122 FAX +30 (210)6454825  
e-mail: civeng@mhxme.gr web: www.mhxme.com

Einzelheiten



DATUM

04/07/2026

Pg

11/11

