



**DESIGN & APPLICATION ENGINEERS S.A.**  
ILEKTRAS 2 & KIMIS AVENUE, 15122 MAROUSSI  
TEL +30 (210)6412233, 2810122 FAX +30 (210)6454825  
e-mail: civeng@mhxme.gr web: www.mhxme.com

Einzelheiten



DATUM

03/07/2026

Pg

1/6

### **Biogas Power Plant**

#### **Zeit-Studie**

2000

#### **Budget (€)**

5,000,000.00

#### **Arbeitgeber**

ILEKTOR SA

#### **Besitzer**

BEAL SA

#### **Position**

Ano Liossia Solid Waste Deposit

Power Plant 13,8 MW for the production of electricity from bio-gas, coming from the digestion of the Ano Liossia Solid Waste Deposit.

We designed the steel structure of the power plant.



**DESIGN & APPLICATION ENGINEERS S.A.**  
ILEKTRAS 2 & KIMIS AVENUE, 15122 MAROUSSI  
TEL +30 (210)6412233, 2810122 FAX +30 (210)6454825  
e-mail: civeng@mhxme.gr web: www.mhxme.com

Einzelheiten



DATUM

03/07/2026

Pg

2/6

## Steel Structure





**DESIGN & APPLICATION ENGINEERS S.A.**  
ILEKTRAS 2 & KIMIS AVENUE, 15122 MAROUSSI  
TEL +30 (210)6412233, 2810122 FAX +30 (210)6454825  
e-mail: civeng@mhxme.gr web: www.mhxme.com

Einzelheiten



DATUM

03/07/2026

Pg

3/6

## *Steel Structure*





**DESIGN & APPLICATION ENGINEERS S.A.**  
ILEKTRAS 2 & KIMIS AVENUE, 15122 MAROUSSI  
TEL +30 (210)6412233, 2810122 FAX +30 (210)6454825  
e-mail: civeng@mhxme.gr web: www.mhxme.com

Einzelheiten



DATUM

03/07/2026

Pg

4/6

## Steel Structure





**DESIGN & APPLICATION ENGINEERS S.A.**  
ILEKTRAS 2 & KIMIS AVENUE, 15122 MAROUSSI  
TEL +30 (210)6412233, 2810122 FAX +30 (210)6454825  
e-mail: civeng@mhxme.gr web: www.mhxme.com

Einzelheiten



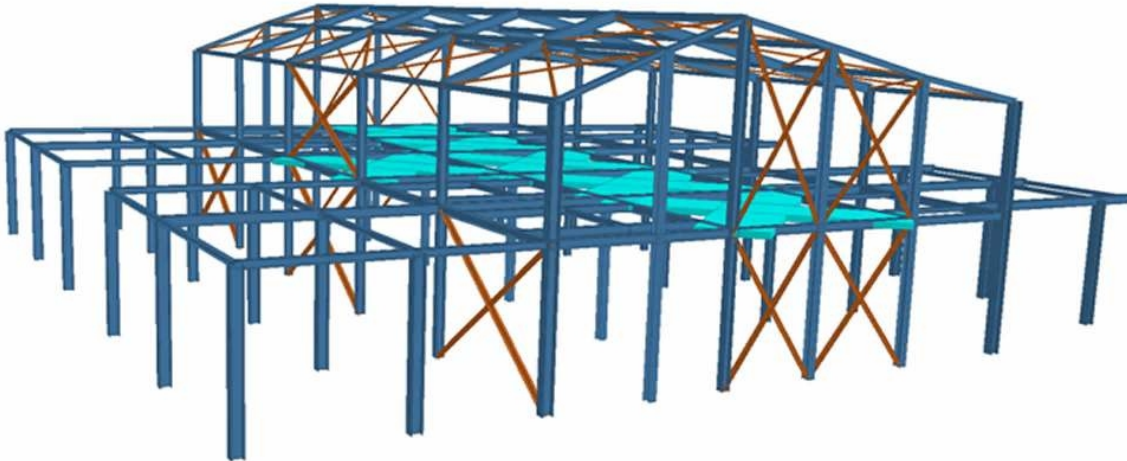
DATUM

03/07/2026

Pg

5/6

*Analysis model*





**DESIGN & APPLICATION ENGINEERS S.A.**  
ILEKTRAS 2 & KIMIS AVENUE, 15122 MAROUSSI  
TEL +30 (210)6412233, 2810122 FAX +30 (210)6454825  
e-mail: civeng@mhxme.gr web: www.mhxme.com

Einzelheiten



DATUM

03/07/2026

Pg

6/6

*Plant General View*

