



DESIGN & APPLICATION ENGINEERS S.A.
ILEKTRAS 2 & KIMIS AVENUE, 15122 MAROUSSI
TEL +30 (210)6412233, 2810122 FAX +30 (210)6454825
e-mail: civeng@mhxme.gr web: www.mhxme.com

Details



DATE

05/12/2026

PAGE

1/4

Takoradi 192 MW Power Plant - Ghana

Date	Budget (€)	Employer
2017		METKA S.A.
	Owner	Place
		Takoradi, Ghana

The scope of the project includes the design of a 192MW combined cycle power plant in Takoradi. The plant will be implemented with the capability to operate on both natural gas and light crude oil, and will utilize the latest advanced version of General Electric's well proven 9E gas turbine.



DESIGN & APPLICATION ENGINEERS S.A.
ILEKTRAS 2 & KIMIS AVENUE, 15122 MAROUSSI
TEL +30 (210)6412233, 2810122 FAX +30 (210)6454825
e-mail: civeng@mhxme.gr web: www.mhxme.com

Details

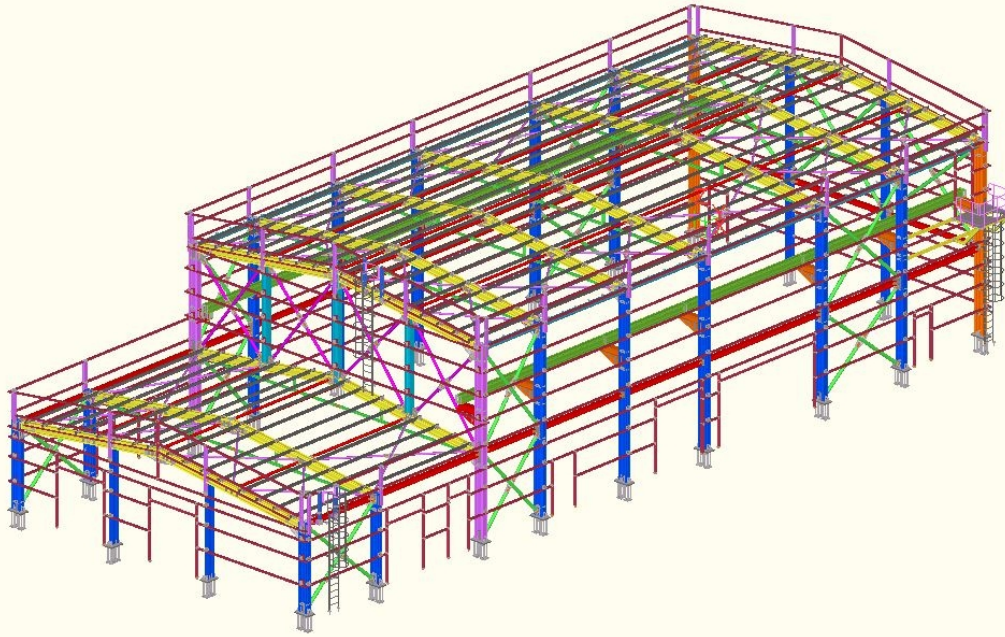


DATE

05/12/2026

PAGE

2/4





DESIGN & APPLICATION ENGINEERS S.A.
ILEKTRAS 2 & KIMIS AVENUE, 15122 MAROUSSI
TEL +30 (210)6412233, 2810122 FAX +30 (210)6454825
e-mail: civeng@mhxme.gr web: www.mhxme.com

Details



DATE

05/12/2026

PAGE

3/4

