



**DESIGN & APPLICATION ENGINEERS S.A.**  
ILEKTRAS 2 & KIMIS AVENUE, 15122 MAROUSSI  
TEL +30 (210)6412233, 2810122 FAX +30 (210)6454825  
e-mail: civeng@mhxme.gr web: www.mhxme.com

Details



DATE

05/12/2026

PAGE

1/6

### **Biogas Power Plant**

<b>Date</b>	<b>Budget (€)</b>	<b>Employer</b>
2000	5,000,000.00	ILEKTOR SA
	<b>Owner</b>	<b>Place</b>
	BEAL SA	Ano Liossia Solid Waste Deposit

Power Plant 13,8 MW for the production of electricity from bio-gas, coming from the digestion of the Ano Liossia Solid Waste Deposit.

We designed the steel structure of the power plant.



**DESIGN & APPLICATION ENGINEERS S.A.**  
ILEKTRAS 2 & KIMIS AVENUE, 15122 MAROUSSI  
TEL +30 (210)6412233, 2810122 FAX +30 (210)6454825  
e-mail: civeng@mhxme.gr web: www.mhxme.com

Details



DATE

05/12/2026

PAGE

2/6

## Steel Structure





**DESIGN & APPLICATION ENGINEERS S.A.**  
ILEKTRAS 2 & KIMIS AVENUE, 15122 MAROUSSI  
TEL +30 (210)6412233, 2810122 FAX +30 (210)6454825  
e-mail: civeng@mhxme.gr web: www.mhxme.com

Details



DATE

05/12/2026

PAGE

3/6

## Steel Structure





**DESIGN & APPLICATION ENGINEERS S.A.**  
ILEKTRAS 2 & KIMIS AVENUE, 15122 MAROUSSI  
TEL +30 (210)6412233, 2810122 FAX +30 (210)6454825  
e-mail: civeng@mhxme.gr web: www.mhxme.com

Details



DATE

05/12/2026

PAGE

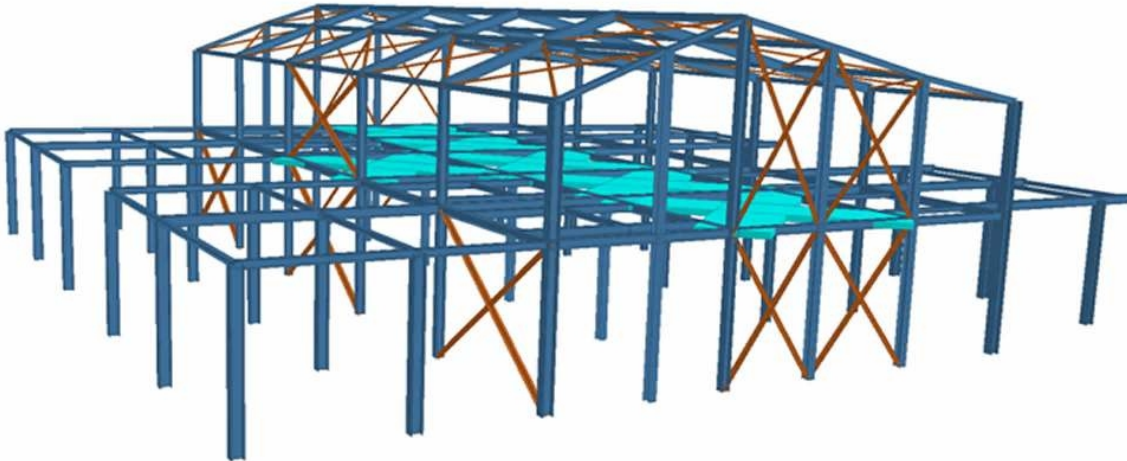
4/6

## Steel Structure





*Analysis model*





**DESIGN & APPLICATION ENGINEERS S.A.**  
ILEKTRAS 2 & KIMIS AVENUE, 15122 MAROUSSI  
TEL +30 (210)6412233, 2810122 FAX +30 (210)6454825  
e-mail: civeng@mhxme.gr web: www.mhxme.com

Details



DATE

05/12/2026

PAGE

6/6

*Plant General View*

